

## Prevention Measures We Can Act On In Our Communities

- Step in when you hear someone being put down because of their gender.
- Learn personal safety and risk reduction techniques.
- Plan on having one friend stay sober at parties to ensure everyone gets home safely.
- Offer to ride with your friend when they are driving an intoxicated individual home from a party.
- Step in when you think someone is not fully able to consent to intimacy.
- Support survivors of sexual assault when they come forward. This sends a strong message that assaults are not tolerated in our communities.
- Communicate with your partner about your sexual boundaries prior to sexual behavior.
- Encourage schools and youth programs to participate in sexual assault and dating violence prevention programs.
- Hold awareness campaigns or events at your work, school, church that supports the message that we do not tolerate sexual violence.
- Support legislation that addresses gender and sexual violence prevention.



## How To Connect With Us:

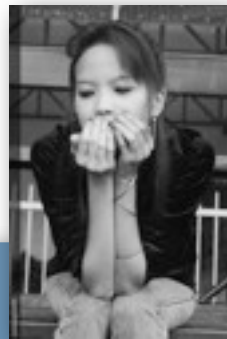
NCASV Southern Offices  
1096 East Sahara, Suite 208  
Las Vegas, NV 89104

NCASV Northern Offices  
POB 12877  
Reno, NV 89510

Visit our website: [ncasv.org](http://ncasv.org)

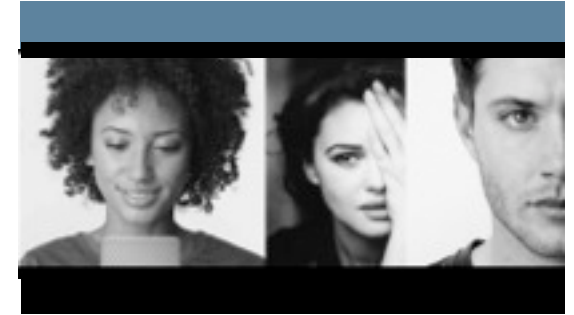


and follow us!



If you have any questions about sexual assault services, programs, or efforts in your area please call our Northern or Southern offices at:

775.355.2220 or  
702.866.0064



# NCASV

## Nevada Coalition Against Sexual Violence

Working towards promoting sexual violence awareness and prevention, while building uniformity and availability of comprehensive services of care throughout Nevada.

[NCASV.ORG](http://NCASV.ORG)

The Nevada Coalition Against Sexual Violence aids Nevada communities in primary sexual assault prevention, and enhances critical victim response services through statewide training, technical assistance, and coalition building.

Our efforts seek to address and unify prevention and service practices in both urban and rural communities.



**Definitions:**

**Sexual Assault and/or Exploitation:**

Is any sexual activity that is forced, coerced or unwanted against the will of the victim. This includes conditions in which the perpetrator knows or should know that the victim is mentally or physically incapable of resisting.

**Primary Prevention:**

Can take many forms and is usually any action that takes place before sexual violence has occurred to deter initial perpetration or victimization.

We advocate a comprehensive approach that involves coalition building, public policy, male involvement, data collection, bystander intervention, and social marketing.

The Nevada Coalition Against Sexual Violence seeks to:

- Encourage public policy changes to improve community responses to sexual violence.
- Build and expand partnerships and relationships within communities statewide to ensure best practices.
- Offer culturally competent and progressive trainings to multi-disciplinary professionals and community agencies.
- Collect meaningful comprehensive data to ensure accurate representation of statewide practical needs.



NCASV is coordinated and funded by grants from the following agencies and programs:

Nevada Attorney General’s Office, Violence Against Women Act’s STOP and SASP, the Centers for Disease Control & Nevada State Health Division’s Rape Prevention Education, and VAWI through the US Department of Justice.



**Membership Benefits**

Your membership dues go directly to supporting the work of NCASV. In addition, becoming a member comes with the following benefits:

- Opportunities to have an active voice in the goals and operations of the Coalition.
- Access to our library of resources and technical assistance by our knowledgeable staff.
- Member discounts at our annual statewide conference.
- 25% of your membership fee will go towards direct lobbying efforts to change public policies.
- Opportunities to serve on the Board of Directors, and/or participate in one of our leadership committees.

**Membership Dues**

Voting privileges vary according to membership level, please visit our webpage or contact our staff for a complete explanation of membership.

- Agency level \$100
- Individual level \$50
- Supporting level \$35